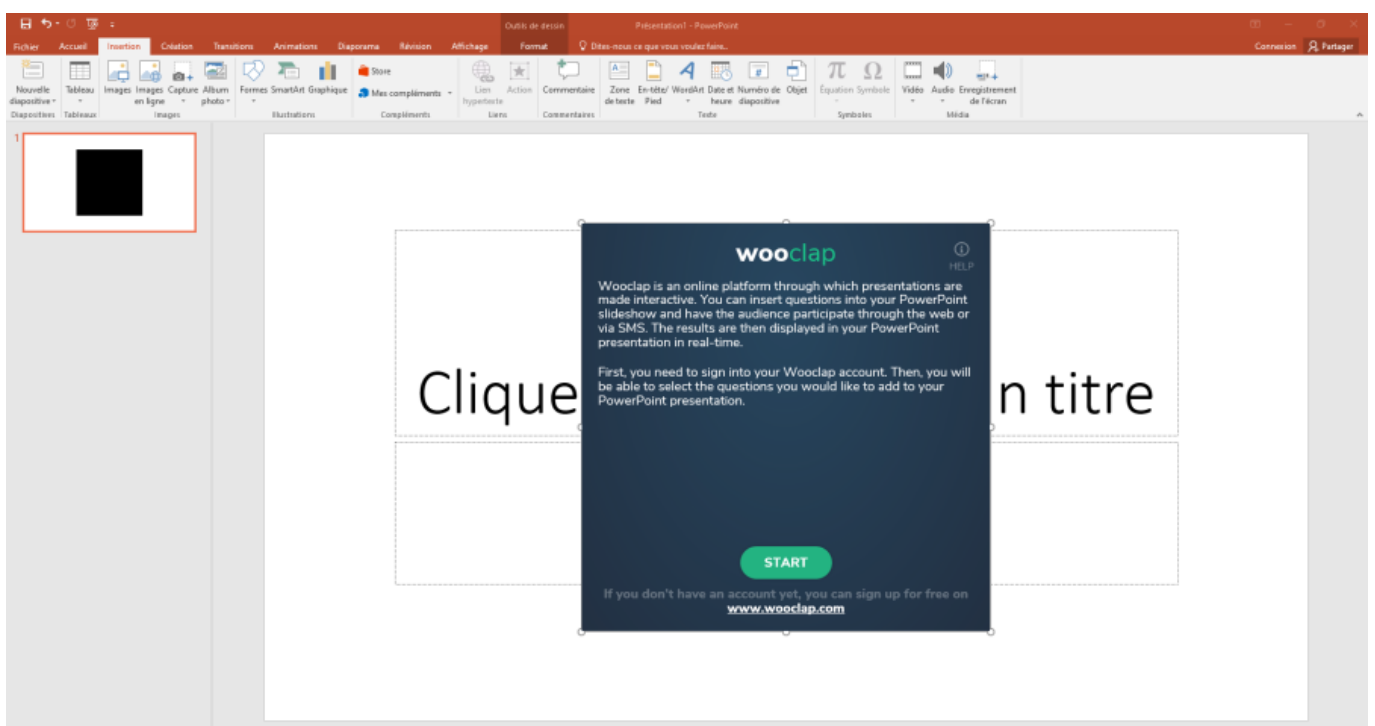
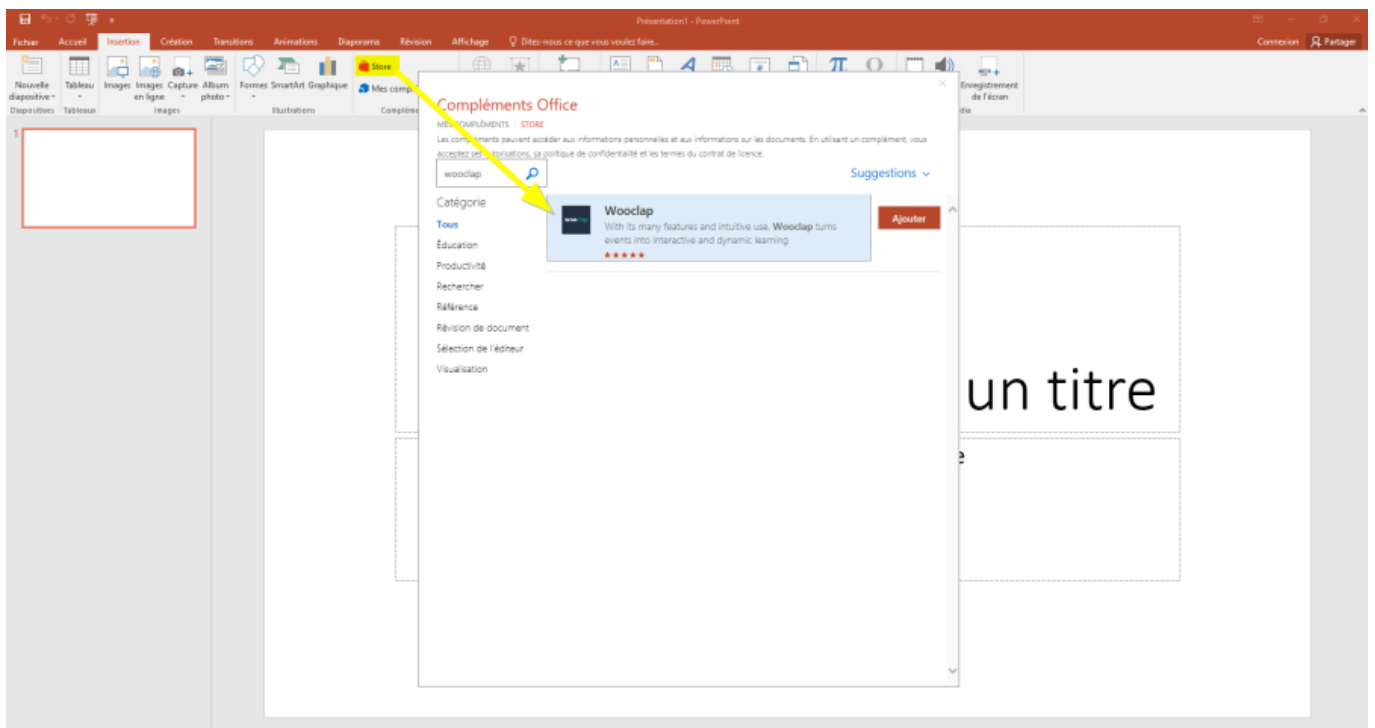
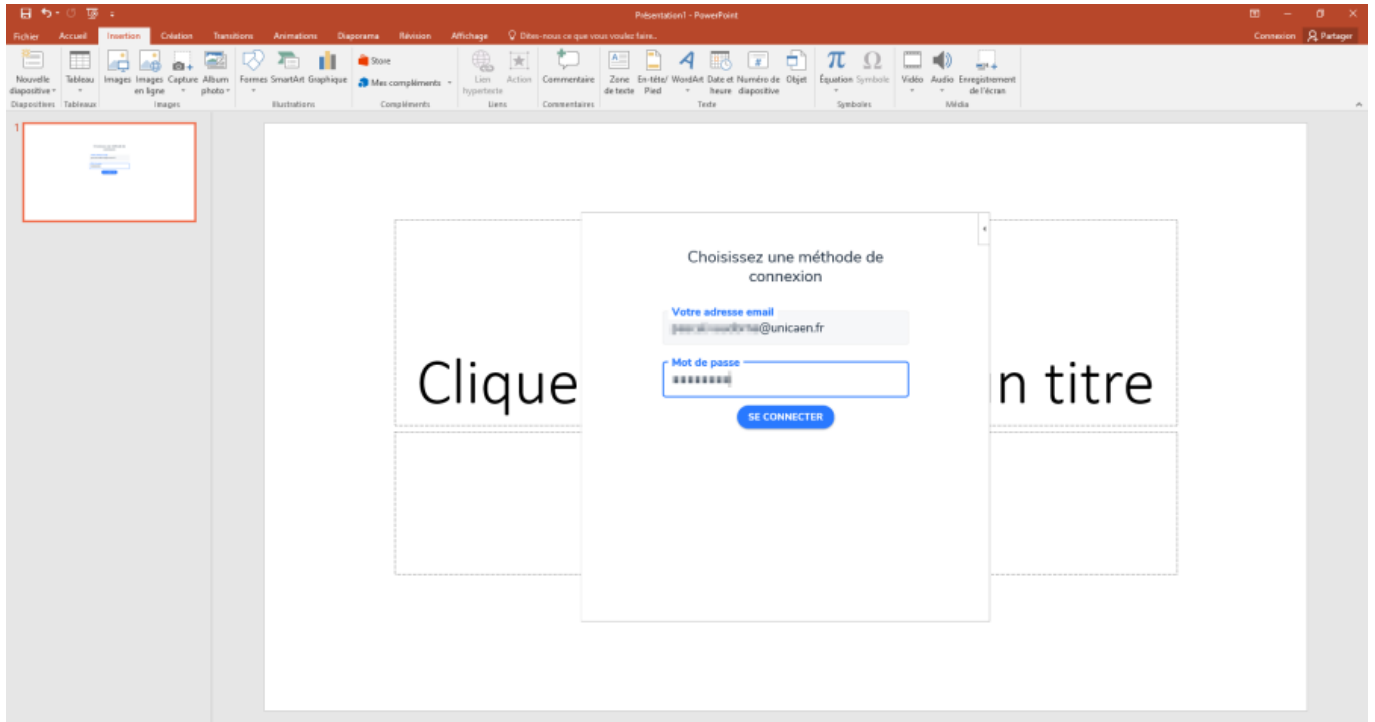


1. Cliquez sur **Store** dans l'onglet **Insertion** de **Powerpoint**.
2. Recherchez le complément **Wooclap**.
3. Cliquez sur **Ajouter**.



4. Entrez votre **adresse e-mail** et votre **mot-de-passe** pour vous connecter au service.



From:  
<https://webcemu.unicaen.fr/> - **CEMU**

Permanent link:  
[https://webcemu.unicaen.fr/doku.php?id=installation\\_du\\_plug-in](https://webcemu.unicaen.fr/doku.php?id=installation_du_plug-in)

Last update: **12/03/2026 18:51**

